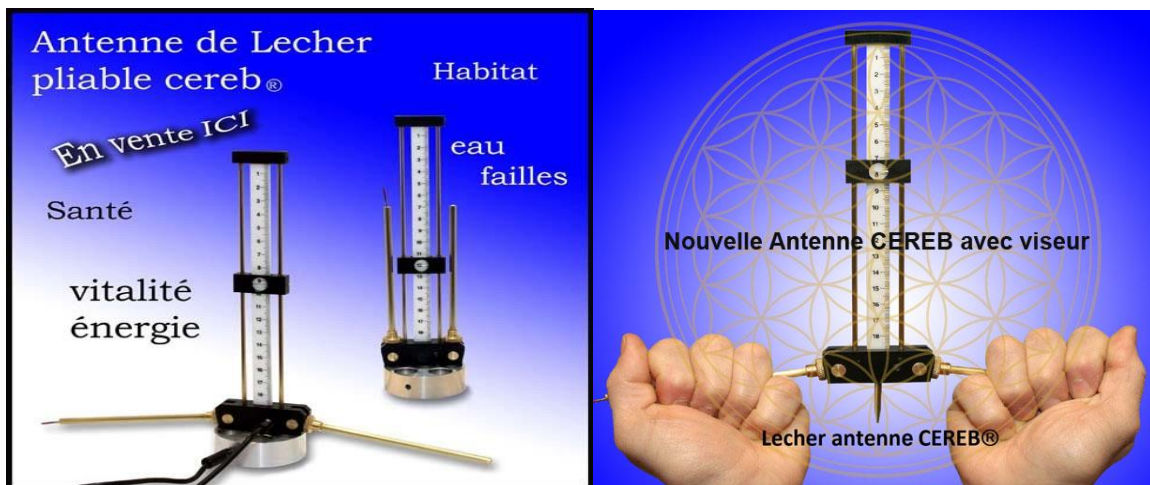


FOLDABLE LECHER ANTENNA CEREB® with optional point

Presentation & Use



Study and Research Centre in BioConstruction

C.E.R.E.B. Clos des Pâquerettes 1

4432 Ans (Belgium)

☎ : 00 32 (0)42 46 25 19

GSM : 00 32 497 467 699

E-mail: cereb.ml@gmail.com Web : www.cereb.be

The foldable Lecher antenna Cereb®:

The Lecher antenna comes in a brown synthetic leather pouch.

The pouch has following contents:

-the Lecher antenna with following components:

- a base of composite material wherefrom 2 metallic wires part forming the Lecher loop that surrounds a graduated ruler, on which a cursor can glide that ensures the contact between the Lecher wires
- 2 branches or mobile metal arms for handling the antenna that can be folded upwards next to the Lecher wires when not working. A polarized rod is inserted in the left arm.

The metal parts are made of brass in order to avoid any interference with stray magnetic fields.

-an aluminium mass with 7 holes, designed according to the golden ratio, which allows the connection of a person to the antenna with the electrical cord. This mass can also be used for distance work: DW.

Or at your choice:

-an aluminium mass with 7 holes (with or without an insulated base). The central hole is for holding 2 ml glass vials (with essential oils or other products).

- an electrical cord with plugs to connect the antenna to the mass

- a laminated memory aid card with the major wavelengths

- the presentation booklet with the user's manual of the antenna

-an optional point which can be screwed into the base of the antenna and new pouch

Our antenna comes with a guarantee, it is a registered model. Each antenna is calibrated and checked and all pieces are tooled "in house".

Your guarantee: satisfied or money back.

There are many antennas available on the market that do not work according to the Lecher principle and whose "zero" level is not fixed.

Chromo-therapy: we have optimized a set of 20 color filters fixed into glass (Newton) covered slides. We can also provide a valise "light-box" for color treatment.

The choice of the color filter(s) is/are made with the antenna.

I am at your service for any further information and thank you for the interest in our product(s).

Yours faithfully

INTRODUCTION

The purpose of this booklet is to briefly present this extraordinary tool for detecting frequencies that is the foldable Lecher antenna CEREB®. This antenna is widely distributed and used throughout the world, both by professionals of all categories (bio-energeticians, acupuncturists, architects, geo-biologists, dowzers, environmental specialists, ...) as by those who are interested in checking the energy quality of their nutrients and their environment... The foldable Lecher antenna CEREB® was developed by Michel Lespagnard – Electrical Engineer, geo-biologist and bio-energetician – the antenna is now an authority among specialists.

Many training courses are offered:

1. practical training for use of the antenna and the ECSOM©-method
2. complete training course to become an expert in environmental quality
3. thematic perfection training courses

Below is a summary of the scientific basis of the Lecher antenna, a presentation of the foldable Lecher antenna CEREB® and its applications in energy medicine and geo-biology.

THE SCIENTIFIC BASIS

The foldable Lecher antenna CEREB® is a scientific instrument based on the work of the Austrian physicist Ernst Lecher (1856-1926), pioneer in the measurements of high frequencies, who demonstrated in 1890 that "the velocity of the electromagnetic wave which is spread in metal wires is substantially equal to that of light in a vacuum" (dictionary of physics - JP. Sarmant – Edition Hachette).

The Lecher wires are the precursor of the Lecher antenna: an electrical line formed by two long straight, parallel metallic conductors and short-circuited by a movable bridge that determines the different wavelengths.

In the Lecher technique, a generator-transmitter maintains electrical oscillations of high frequency at one end, the other end being closed on an adjustable impedance. "The existence of stationary waves is detected by a metal bridge (cursor) sliding on the two wires and carrying an incandescent lamp that lights up at the maximum of the loop current" (dictionary of physics - JP Mathieu, A Kastler, P.Fleury – Edition Masson-Eyrolles).

The foldable Lecher antenna CEREB® measures the electromagnetic radiation that surrounds us that emanate from all living organisms or our environment.

It consists of two closed Lecher wires that are looped at one end and connected by a mobile cursor at the other end. This cursor allows you to select wavelength markers on a ruler and works according to the same function as the set button of a radio receiver.

The adjustable loop being closed; the setting on the ruler of the electromagnetic radiation induces Foucault currents inside making the instrument sensitive to Laplace forces: electromagnetic energy is then converted into a mechanical effect which is translated into a tension felt in the hands of the user and makes the antenna dip.

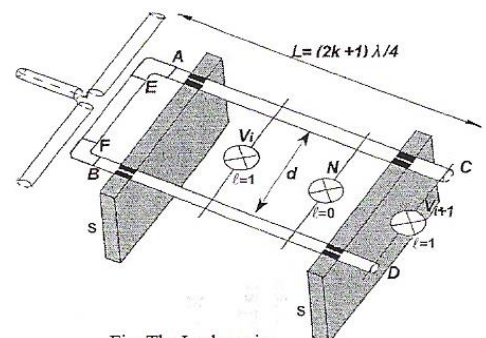


Fig. The Lecher wire

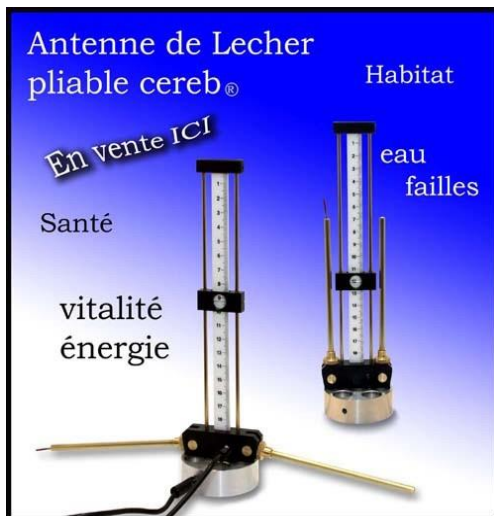
PRESENTATION

The arms of the foldable Lecher antenna CEREB, can be folded to reduce its size and makes it easier to transport. By design, the antenna meets the very high vibratory quality requirements, is easy to use, measures with high accuracy and has a high emission capacity and energy transfer.

The CEREB antenna also allows to restore harmonies and energy channels in humans, animals, plants and between elements in our environment, in order to obtain an overall energy balance.

The foldable Lecher antenna CEREB®, which is made in Belgium, is delivered in a pouch, with a cord and a metallic mass with 7 holes and allows to execute a precise task of selection, research, harmonization, information transfer, dosage, posology, compatibility research, ... A magnetic rod allows the detection of the polarities and their intensity.

KEY STRENGTHS



- High vibratory quality as a result of its design and the choice of its construction materials
- Magnetic free material is used in order to

ensure that all vibratory measurements of the electromagnetic (EM) waves are free of any interference and to avoid all parasitic influences on the measurement.

- Great capacity of receiving and transferring energy.
- Foldable arms for reducing size and easier transport in your pocket.
- Perfect balance for better handling. There is no need for any amplification of the signal.
- Used in geo-biology, architecture, agriculture, ... Research of products or materials, qualitative and quantitative evaluations, ...
- Use in energetics and wellbeing according to the ECSOM©-method, selection of nutrients, dosage, posology, work on the polarities, ...
- Tasks and tests with the mass with 7 holes

MAIN APPLICATIONS

The applications of the foldable Lecher antenna CEREB® are many. Its very high quality makes it an instrument with a high accuracy in architecture (geo-biology, decoration, urban planning, quality of the environment...) as in energy balancing (bioenergetics, acupuncture, homeopathy, selection, dosage, posology...). It allows making a complete picture of detection and regulation of all human balance parameters of a person in his/her body, of his/her diet, of his/her medication and of his/her environment.

-Applications in Energetics

1. Whether it is human, animal, vegetal or mineral, the foldable Lecher antenna CEREB® allows to detect and measure any energy field or vibratory information accurately.
2. It is a universal tool for the bio-energetician to investigate, to question, harmonize and even 'dialogue' with the energy - because through him the energetic body communicates the information it needs for the user to restore balance and to lift energy blockages.
3. The ECSOM©-method (study of compatibility and synergy between organisms and materials) allows to check the precise dosage and posology for a particular treatment. This is a valuable aid to health professionals and other fitness therapists, in the establishment of their treatments, but also in their concern for precision and personalization of these treatments.
4. Finally, it allows, in its role of energy transmitter, to reactivate some acupuncture points in either their activation or sedation.

-Applications in Geo-Biology and Environmental Quality

1. The Lecher antenna CEREB is an incomparable tool for the architect (planner, landscaper, interior architect), as for the geo-biologist, the expert in environmental quality or the Master of the art of traditional Feng Shui.
2. The antenna allows the detection of geo-biological aggressions (cosmo-telluric networks, faults, caves, groundwater, ...), ecological aggressions (heavy metals, chemical pollution,...) or ambient aggressions (electrical, magnetic, wireless, microwave,...).
3. Used in architecture or planning, it allows to select the most suitable materials in respect of energy balance of individuals. In interior design, it allows to choose wisely the ideal location for furniture, mirrors, and other items...

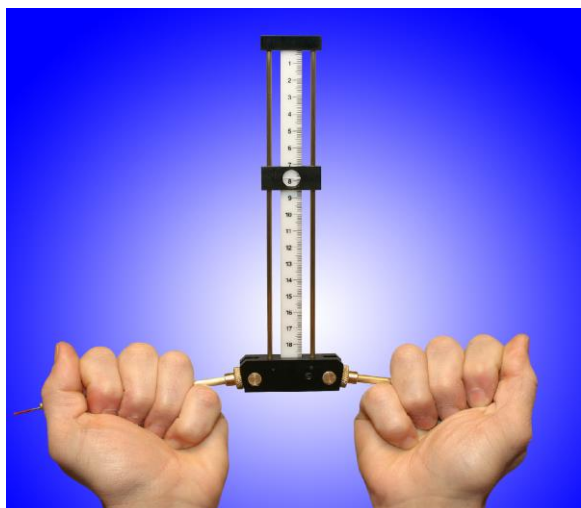
MANY OFFERED COURSES AND TRAININGS

In the practical training course for use of the antenna and the familiarization with the ECSOM©-method you develop an ease with the instrument in order to better explore its possibilities.

The training course to become an expert in Environmental Quality done by CEREB, Study and Research Centre in Bioconstruction in Belgium and abroad, allow you to obtain solid professional and personal knowledge and skills.

Thematic perfection training courses.

USE



The use of the foldable Lecher antenna CEREB® requires no special talent.

Only regular practice and perseverance will help everyone achieve more skill and precision.

The antenna is held in both hands, palms turned upwards, the graduated ruler facing the user.

Each arm of the antenna is held between the thumb and the little finger, the other fingers are folded towards the palm of the hand and are over the arms of the antenna.

The bottom of the central block captures the electromagnetic emissions and must be directed to the object or the person to analyze.

HOW TO OPERATE

-Antenna in “rest” position:

1. Unscrew the arms and fold them into a vertical position (left and right next to the Lecher wires),
2. Screw the grooved nuts against the base,
3. Glide the cursor down to 17,6 Global organic synergy LA or 17,7 divine energy LA.

-For geo-biology measurements or research:

1. Raise the cursor;
2. Unscrew the arms (that are in vertical “rest” position) in order to bring them in the “working” horizontal position. Never force anything (there is a right and a left thread that stay in the vertical position);
3. Screw in the arms till they are in contact with the “Lecher” wires;
4. Screw the grooved nuts to the base of the antenna;
5. The magnetized rod is put in the left arm of the antenna (polarity research);
6. Your antenna is now ready for measuring.

-For energetics measurements or research: with the mass connected to the antenna; start from the part where the antenna is in the position to do “geo-biology measurements”:

1. Unscrew the grooved nuts one or two tours from the base;
2. Unscrew the arms that are held by the user a quarter or a half tour from the base;
3. Screw the grooved nuts to the base of the antenna. This way, the arms are disconnected from the Lecher wires and the communication is through the mass and the electrical cord with the antenna.
4. The mass with the 7 holes is put in the hand of the person that is measured.
5. The mass also serves as a support for products to be tested and several other applications.

MARKERS AND MAJOR USED WAVELENGTHS

LA GEBIOLOGY

12,20	Global Hartmann grid	8,60	Faults and underground caves
6,90	Diagonal Curry grid	7,40	Middle line
7,60	Great global or sacred grid	5,50	Iron (white iron pipe)
8,20	Great diagonal grid	1,35	Stagnant water
7,80	Running water (electricity, wiring, radio-waves, TV, radar)	1,10	The sacred

LA HUMAN ORGANS

3,20	Large intestine	4,15	Central Nervous System
3,25	Mucosa	4,20	Stomach
3,30	Prostate	4,30	Pancreas
3,35	Ovaries	4,30	Metabolism / hand
3,50	Sinus, jaw, bone, ...	4,40	Coronaries L/R
3,60	Eyes, hair, skin	4,45	Kidneys L/R
3,65	Appendix	4,50	Duodenum
3,70	Spleen	4,65	Bladder
3,75	Immune system	4,70	Adrenals
3,80	Liver	4,90	Thyroid
3,90	Uterus	9,60	Joints
4,00	Gall bladder		

LA ENERGETIC

2,0	Death	9,0	Superior vegetal
2,1	Lymphatics	10,0	The nodes of the Hartmann grid
2,5	Human harmony	12,0	The « cosmic » channel C
2,7	Mineral	13,0	The phenomenal
3,8	Vegetal	14,0	Gold
4,2	Animal	15,3	The quality of the C-T synergy (chest)
5,0	Water	15,3	Electromagnetic balance of the body (forehead)
5,2	Magnetic Nord		
5,7	The deep centripetal human field	17,6	Global vibratory synergy (chest)
7,8	The outer human centrifugal field	17,6	Global organic synergy (forehead)
8,0	The « telluric » channel T	17,7	Spiritual energy, divine energy

We only show the main wavelengths here, those who have been very extensive validated and are invariable in time and in space.

There are others that have not proven stable.

HOW TO ACQUIRE A FOLDABLE LECHER ANTENNA CEREB®

The CEREB® foldable Lecher Antenna can be ordered directly for 199 euros or 219 euros with the viewfinder (delivery conditions and prices on request) from CEREB, Centre d'Etudes et de Recherches en Bioconstruction at the following address:

Study and Research Centre in BioConstruction

C.E.R.E.B. asbl Clos des Pâquerettes 1

4432 Ans (Belgium)

☎ 00 32 (0)42 46 25 19

Mobile : 00 32 497 467 699

E-mail : cereb.ml@gmail.com

Web -Internet : www.CEREB.be

A folder with 20 color filters allows to work with chromotherapy.

The range of devices used in bio-energy and environmental quality control includes, the foldable Lecher antenna CEREB®, but also other devices for testing and stimulation, documentation can be send to you at your request.

The program of the courses and trainings in your area can be found on the website or send to you at your request.

Any reproduction, adaptation, representation or translation, even partial, of the present document and photos cannot be done without written permission from the responsible editor: CEREB asbl, Lespagnard Michel, 1 Clos des Pâquerettes, 4432 Ans – Belgium.

See also geo-biology material, Hartmann lobes (small and large model) and instruments for measuring of low-frequency electromagnetic fields (ME3030B from 16Hz to 2 kHz or MR3830 from 16 Hz to 100 kHz and high frequencies (TES92 50MFz to 3,5 GHz or TES593 from 10 MHz to 8 GHz)... Hardware protection against waves of mobiles phones, DECT, PC, WIFI, screen, ... Information on request